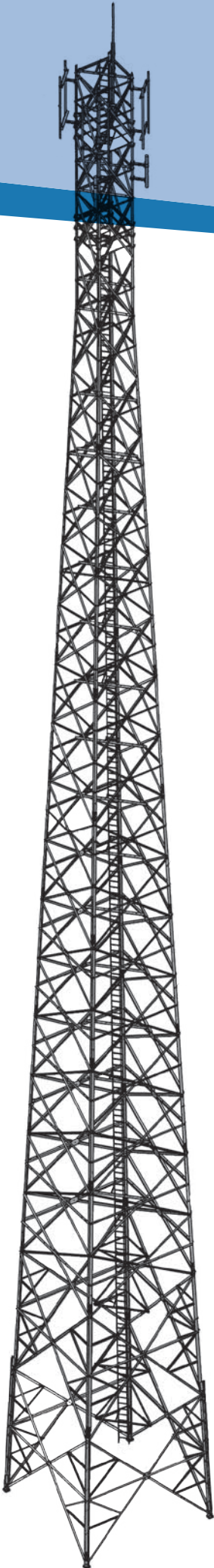


A Tower

Four-Legged Angular Towers



- Available in heights of 50 to 120m
- Designed for medium to heavy loads
- Designed for primary cellular and MW backbone sites or central communication hubs
- Lower freight cost due to freight efficiency
- Available with a large variety of accessories that can be easily mounted at any stage
- Enables easy reinforcement of legs at the site
- Modular design to fit a specific site design and enable last-minute modifications

A Tower

Technical Details

Accessories:

- Working and rest platforms
- Horizontal cable gantries
- Antenna mounts
- Anti-climb guard & other safety devices
- Paint kit (ICAO standards)
- Obstruction lighting system (ICAO standards)
- Lightning protection kit

Optimal Height:

50 to 120m

Design Standards:

TIA/EIA 222-G, or BS8100,
EUROCODE 3 PART 3-1

Materials:

- Legs ST 52-3
- Braces and plates ST 37-2

Connections:

Bolts (ISO 8.8, SAE Grade 5, or
ASTM A-325) + flat washers, nuts
and spring washers
(5% hardware overage)

Anti-Corrosion Treatment:

All steel elements are hot-dip
galvanized (ASTM A123)
Paint kit (white/orange)

Anchoring:

Anchor rods (ASTM F1554) used
with leveling nuts and a positioning
template

Ladder:

- Caged or open ladder with safety
climbing line or rail
- Usually installed inside the tower
- Option for attachment to any
tower face
- Vertical cable hangers

Shipment:

Standard 20' to 40' ISO container

Documentation:

- Detailed packing list
- Installation & maintenance manual
- Foundation design

